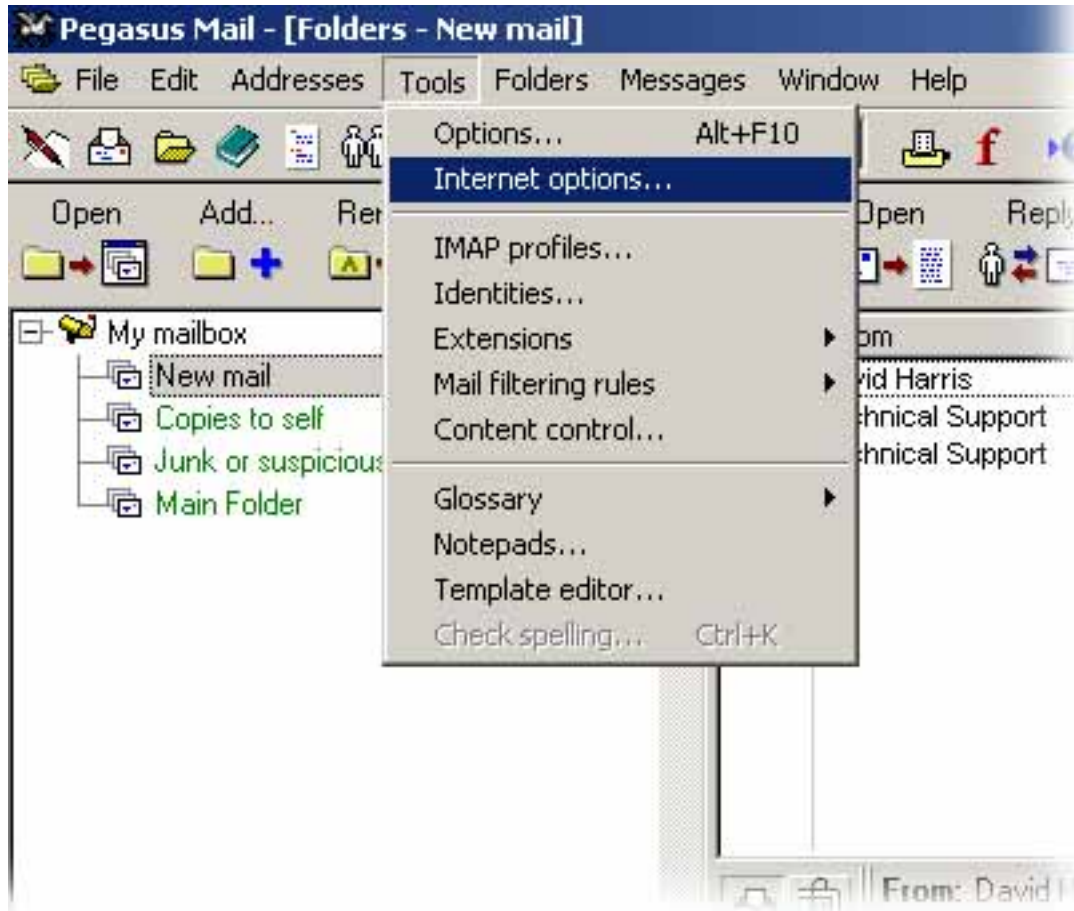


# Sonstige

## How do I set up my eMail account under Pegasus Mail ?

### Pegasus Mail 4.1

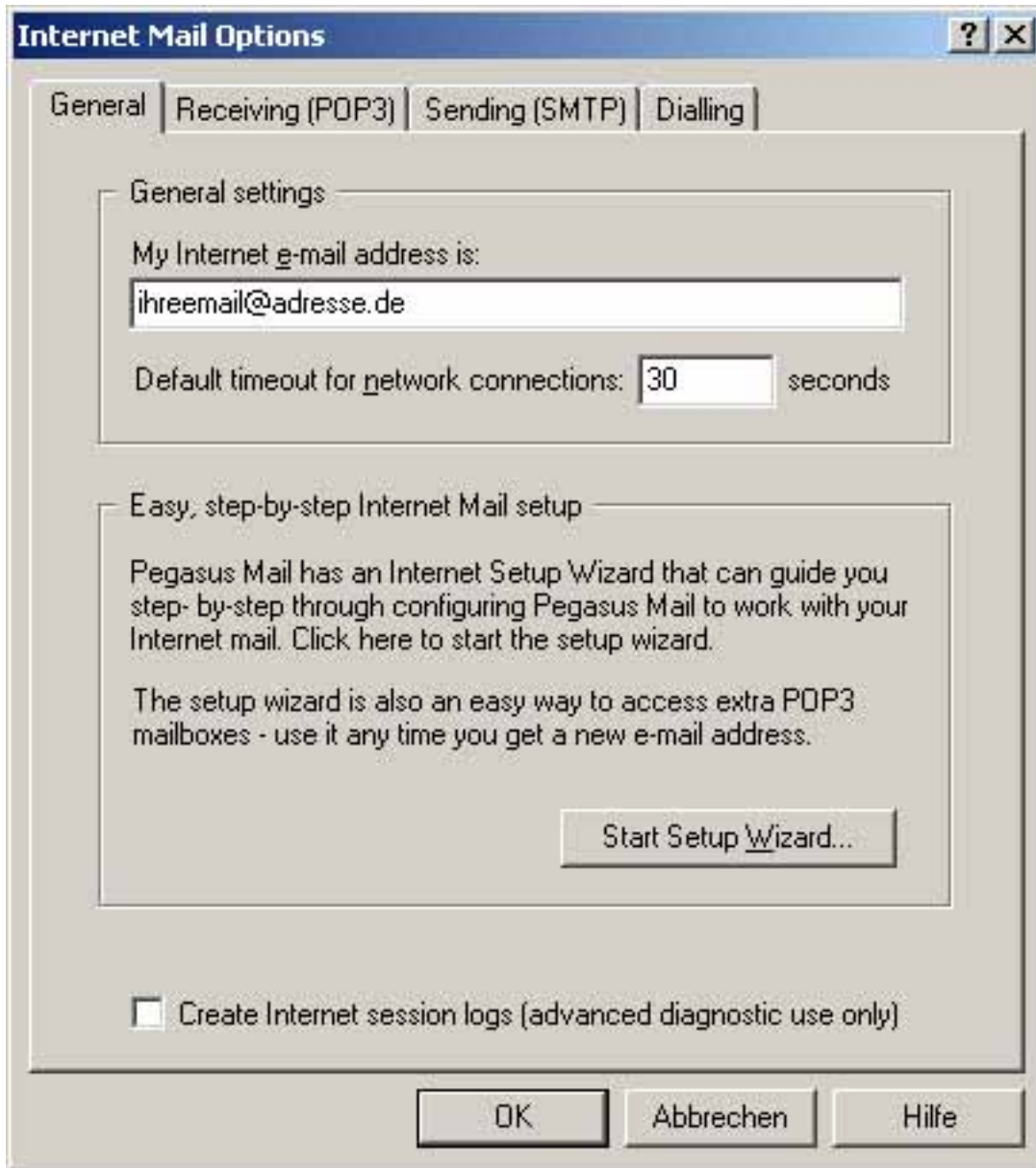
Please select „Tools“ -> „Internet options...“ in the Pegasus Mail 4.1 welcome screen



The window „Internet Mail Options“ appears.

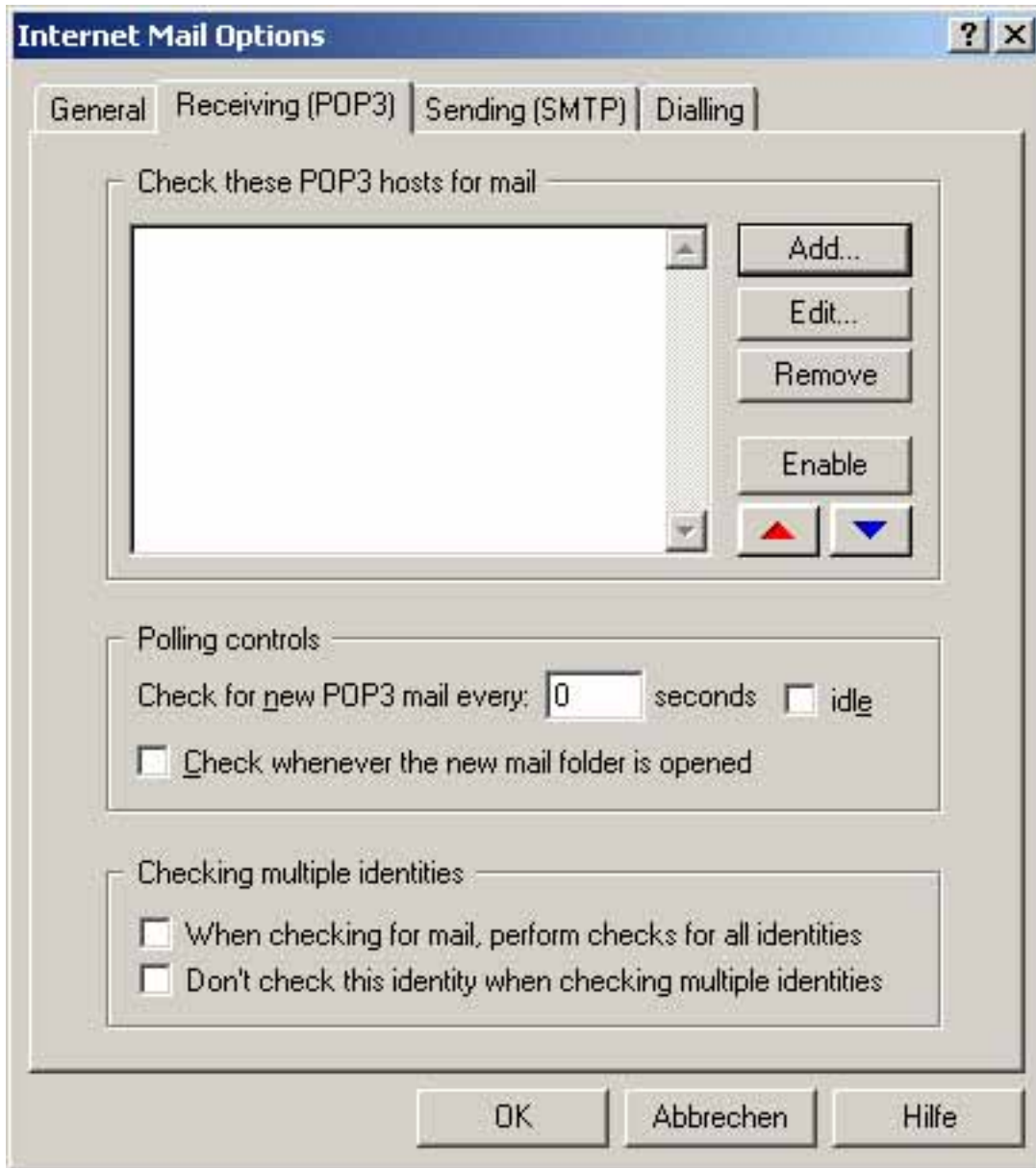
Select the „General“ tab and enter your eMail address.

# Sonstige



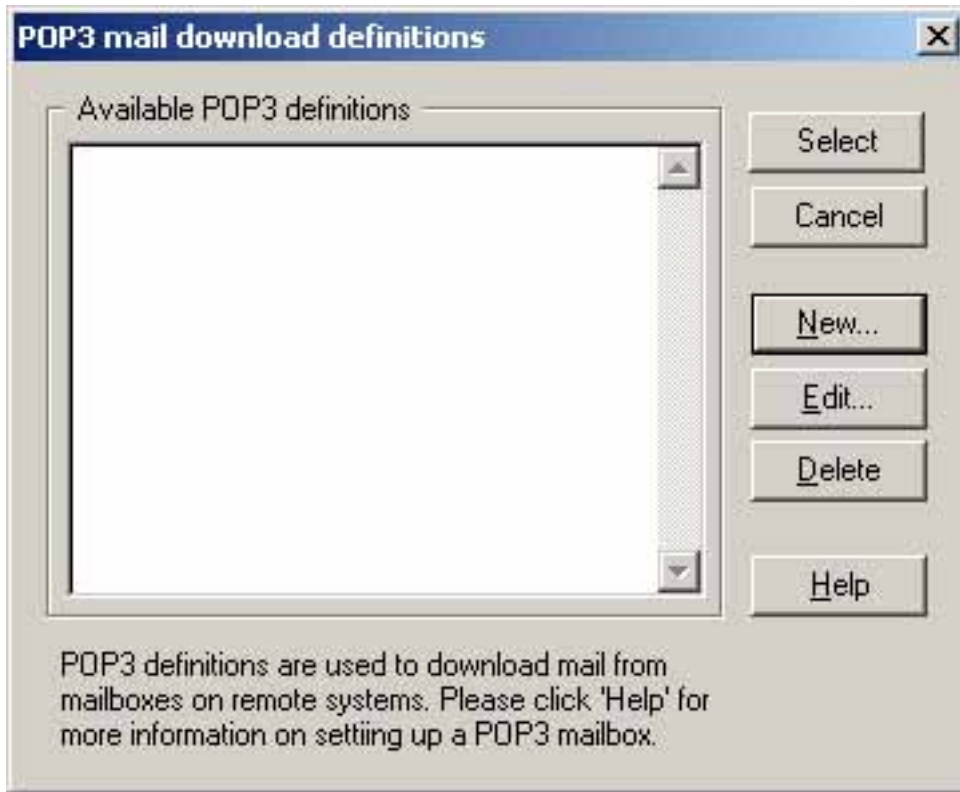
Select the „**Receiving (POP3)**“ tab and click the "**Add...**" button.

# Sonstige



The window „**POP3 mail download definitions**“ appears.  
Please choose the „**New...**“ button.

# Sonstige



The window „**Settings for retrieving mail (POP3)**“ opens up.  
Please enter the required data according to our defaults under the tab „**General**“.

# Sonstige

Settings for retrieving mail (POP3)

General | Security | Download controls

Enter a name for this definition

ihree-mail@adresse

General settings for receiving mail via POP3

Server host name: pop3.ServerName.de

User name: Ihr Benutzername

Password: \*\*\*\*\*

Optional and advanced settings for receiving mail

Server TCP/IP port: 110 Timeout: 30 seconds

Count messages when checking, but don't download them

Delete mail on server once it has been successfully retrieved

Scheduling

Check no more frequently than once every - 0 minutes

OK Abbrechen Hilfe

Please click the „**OK**“ button.

You will see the „**Internet Mail Options**“ window again.

Configuring Pegasus for sending (SMTP) eMails is unfortunately not possible.

With this your Pegasus Mail 4.1 is configured and ready to retrieve eMails.

Unique solution ID: #1422

Author: EUserv Kundensupport

Last update: 2012-07-17 09:21