

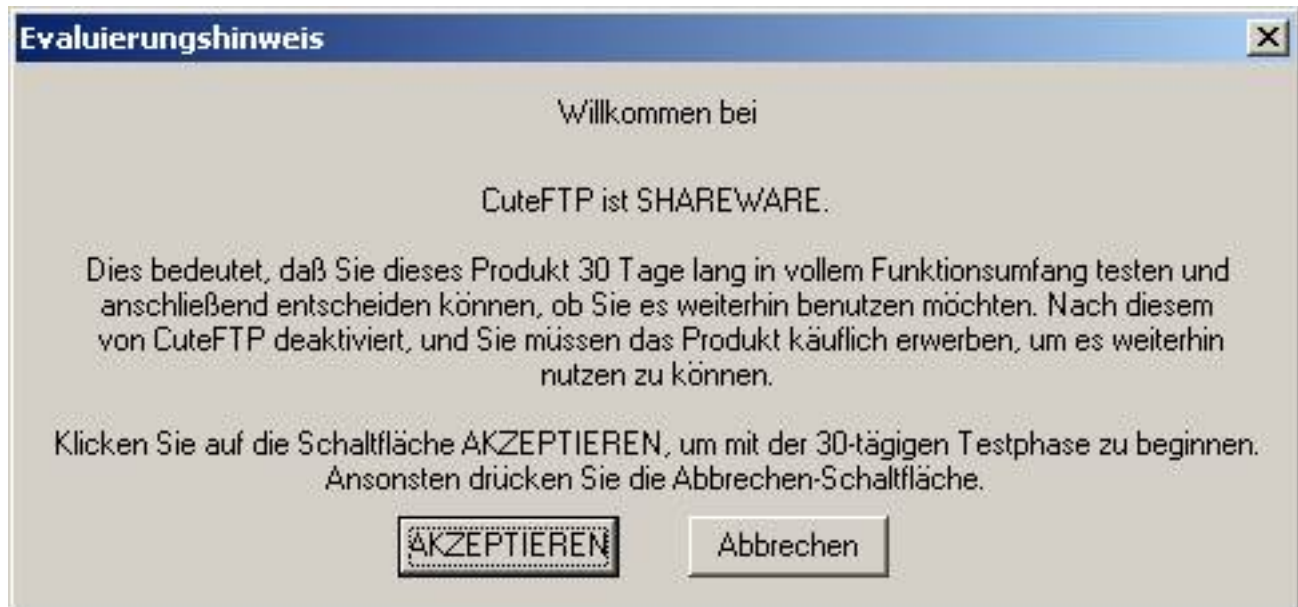
# Einrichtung FTP-Upload

## How do I set up the FTP upload under Cute-FTP ?

Cute-FTP 2.6.1

After installing the program proceed as follows:

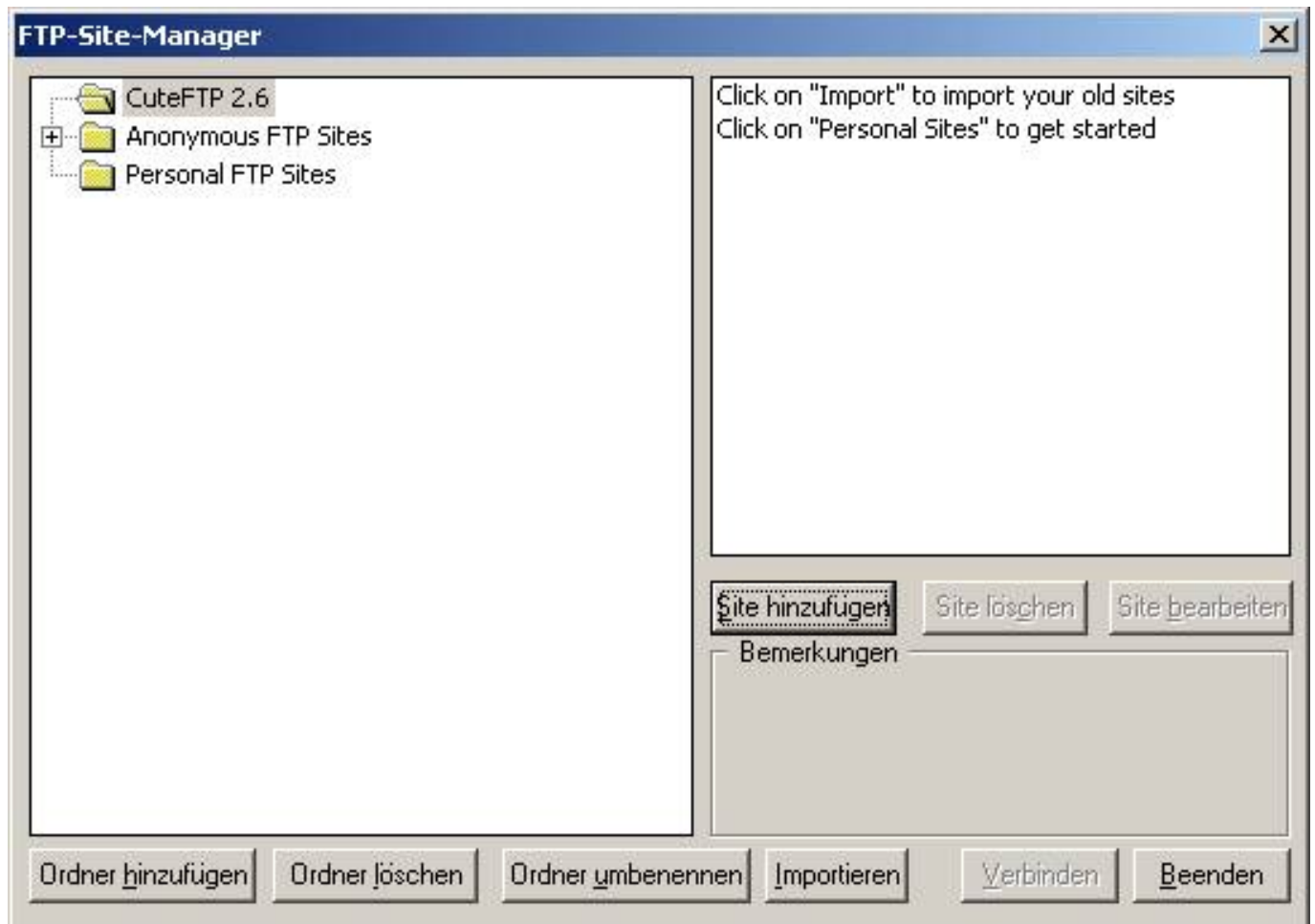
**Run the program** and confirm the window with the evaluation notification by clicking **Accept**.



---

Click **Add site** to set up your FTP access for the web server.

# Einrichtung FTP-Upload



**Assign a name** to the FTP access for your web server

# Einrichtung FTP-Upload

The 'Site hinzufügen' dialog box is shown with the 'Allgemein' tab selected. The 'Site-Name' field contains 'FTP domainxy.de'. The 'Host-Typ' dropdown is set to 'Auto-Detect'. The 'Host-Adresse' field is empty. The 'Ausgangsverzeichnis' field is empty. The 'Benutzerkennung' and 'Kennwort' fields are empty. The 'Remote-Verzeichnisfilter' field is empty, and the 'Lokal filtern' checkbox is checked. The 'Anmeldetyp' section has three radio buttons: 'Normal' (unselected), 'Anonym' (selected), and 'Doppelt' (unselected). The 'Transfertyp' section has three radio buttons: 'ASCII' (unselected), 'Binär' (unselected), and 'Auto' (selected). The 'Ausgangsverzeichnis' field has a browse button (...). The 'Lokaler Verzeichnisfilter' field is empty. The 'OK', 'Abbrechen', 'Übernehmen', and 'Hilfe' buttons are at the bottom.

**Provide the host address** you received with the activation eMail (IP address of the web server or the name of your main domain, e.g. `www.yourdomain.com`).

The 'Site hinzufügen' dialog box is shown with the 'Allgemein' tab selected. The 'Site-Name' field contains 'FTP domainxy.de'. The 'Host-Typ' dropdown is set to 'Auto-Detect'. The 'Host-Adresse' field contains 'ftp.ServerName.e.de'. The 'Ausgangsverzeichnis' field is empty. The 'Benutzerkennung' and 'Kennwort' fields are empty. The 'Remote-Verzeichnisfilter' field is empty, and the 'Lokal filtern' checkbox is checked. The 'Anmeldetyp' section has three radio buttons: 'Normal' (unselected), 'Anonym' (selected), and 'Doppelt' (unselected). The 'Transfertyp' section has three radio buttons: 'ASCII' (unselected), 'Binär' (unselected), and 'Auto' (selected). The 'Ausgangsverzeichnis' field has a browse button (...). The 'Lokaler Verzeichnisfilter' field is empty. The 'OK', 'Abbrechen', 'Übernehmen', and 'Hilfe' buttons are at the bottom.

# Einrichtung FTP-Upload

Enter your user name and your password you received with the activation data. The password is only visible as a row of asterisks.

The screenshot shows the 'Site hinzufügen' dialog box with the 'Allgemein' tab selected. The fields are as follows:

- Site-Name: FTP domainxy.de
- Host-Typ: Auto-Detect
- Host-Adresse: ftp.ServerName.e.de
- Ausgangsverzeichnis: (empty)
- Benutzerkennung: Benutzername
- Kennwort: (masked with asterisks)
- Remote-Verzeichnisfilter: (empty)
- ☒ Lokal filtern
- Anmeldetyp: ☒ Normal, ☐ Anonym, ☐ Doppelt
- Transfertyp: ☐ ASCII, ☐ Binär, ☒ Auto
- Ausgangsverzeichnis: (empty)
- Lokaler Verzeichnisfilter: (empty)

Buttons at the bottom: OK, Abbrechen, Übernehmen, Hilfe.

Set your local home directory, where all websites are stored that you have created.

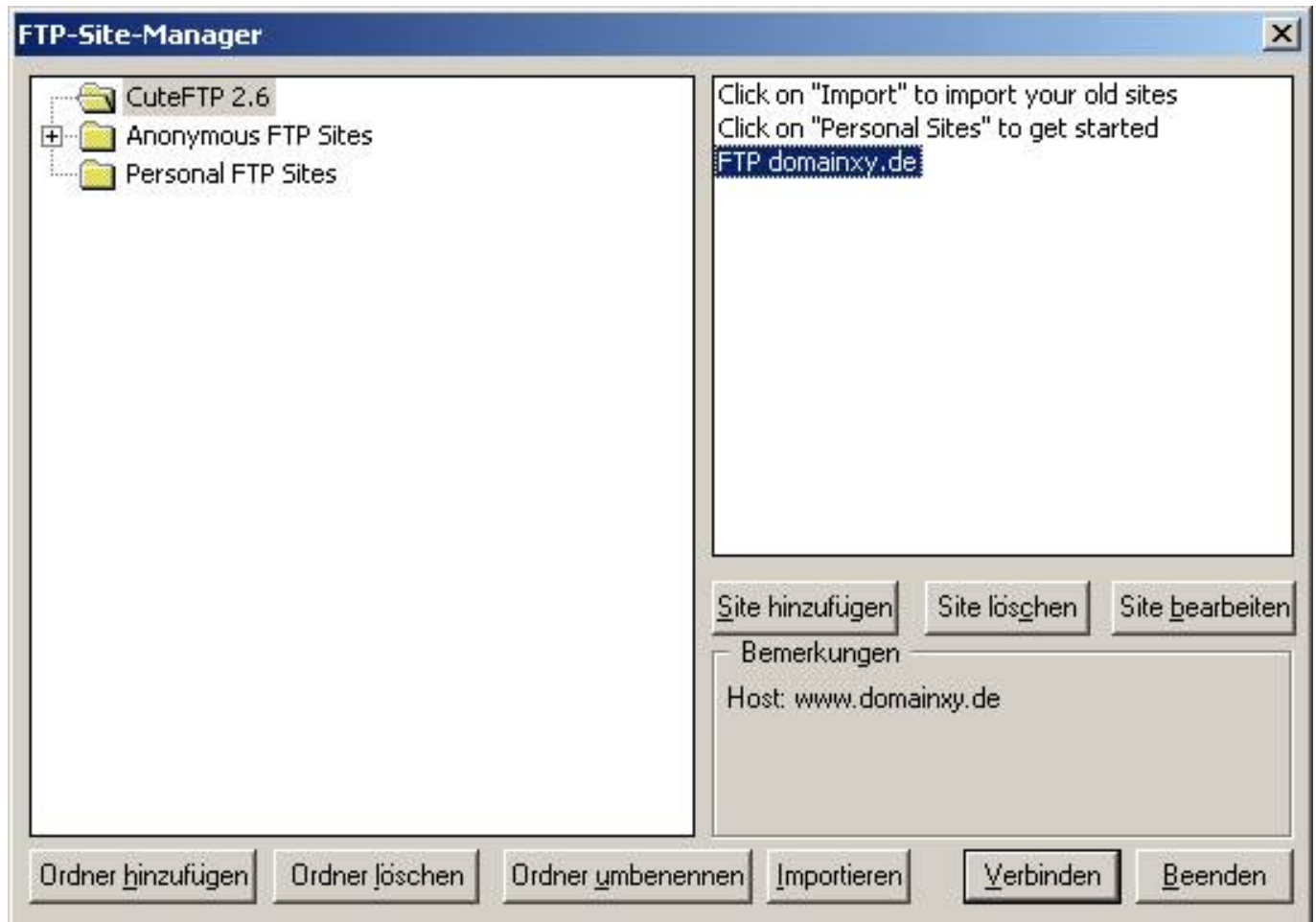
The screenshot shows the 'Site hinzufügen' dialog box with the 'Allgemein' tab selected. The fields are as follows:

- Site-Name: FTP domainxy.de
- Host-Typ: Auto-Detect
- Host-Adresse: ftp.ServerName.e.de
- Ausgangsverzeichnis: C:\Eigene Dateien\webverzeichnis\
- Benutzerkennung: Benutzername
- Kennwort: (masked with asterisks)
- Remote-Verzeichnisfilter: (empty)
- ☒ Lokal filtern
- Anmeldetyp: ☒ Normal, ☐ Anonym, ☐ Doppelt
- Transfertyp: ☐ ASCII, ☐ Binär, ☒ Auto
- Ausgangsverzeichnis: C:\Eigene Dateien\webverzeichnis\
- Lokaler Verzeichnisfilter: (empty)

Buttons at the bottom: OK, Abbrechen, Übernehmen, Hilfe.

# Einrichtung FTP-Upload

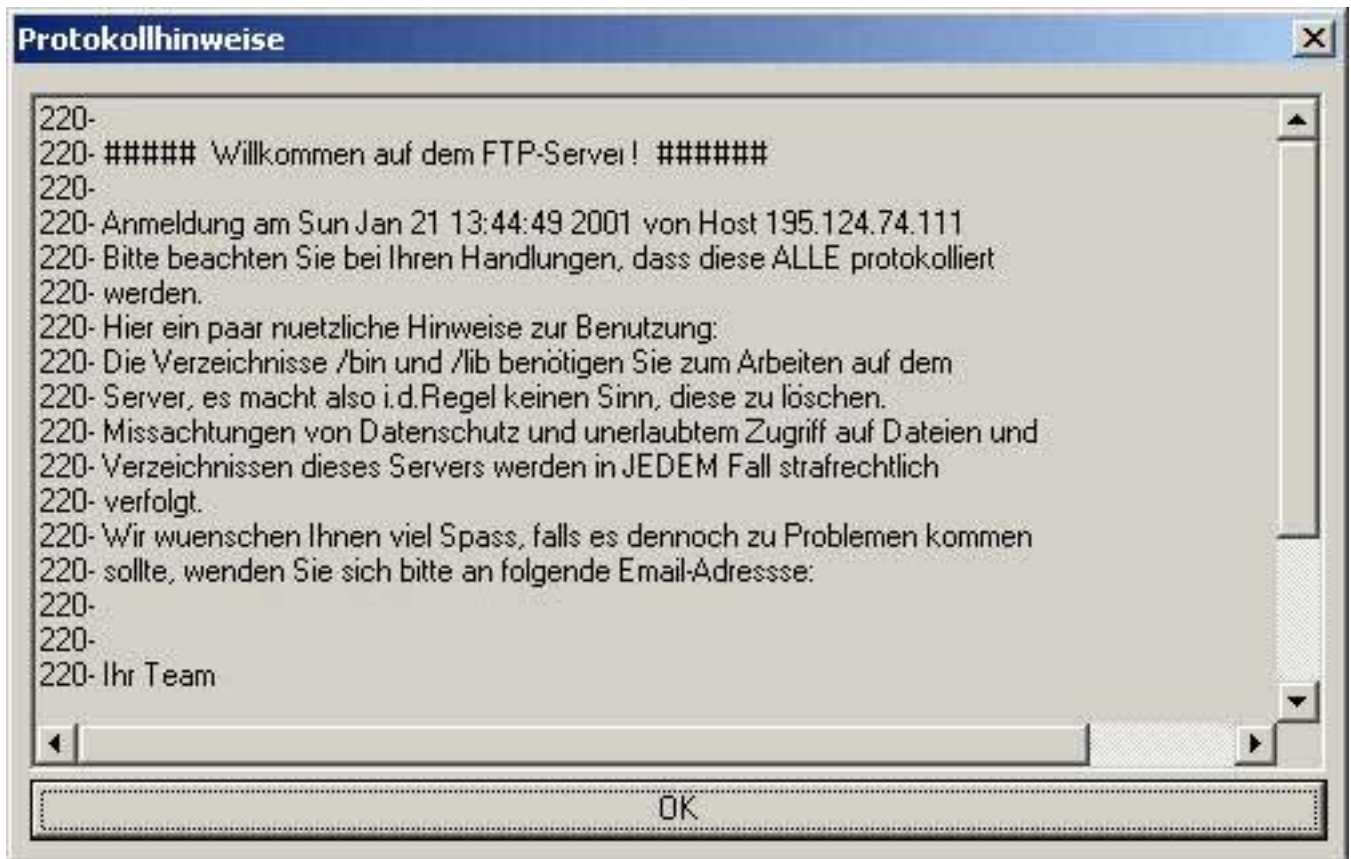
Now click **OK** – the remaining presets are correct mostly. Further information can be found using the program's help function. Make sure that you are **Online**, and **select** the FTP site you have just created, click **Connect** now.



Now the FTP connection with your web server will be established and you should see a login message which you will have to confirm with **OK**.



# Einrichtung FTP-Upload



Now you can see the FTP directory with some sub directories (folder) on the right side and the files from your website directory on your local PC on the left side.

**Change into the "/data" resp. the "domainxy.data" directory on your FTP server. Please keep in mind that you are always in the sub directory "/data" if you want to modify website files. In case the necessary directories are modified or corrupted, functioning and accessibility of your web server are affected very bad or can be completely dysfunctional.**

In order to **Transfer the files** select files and directories you want to transfer from the left side and drag them into the right side with the mouse.

When all files have been transferred you can start the browser, enter your Internet address and have a look at the transferred files.

Unique solution ID: #1456

Author: EUserV Kundensupport

Last update: 2012-07-17 16:25